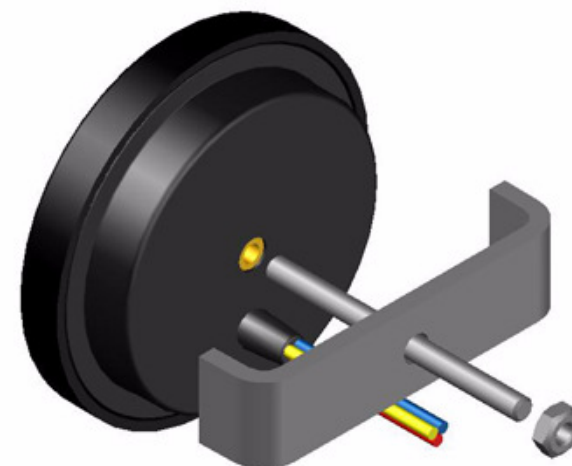
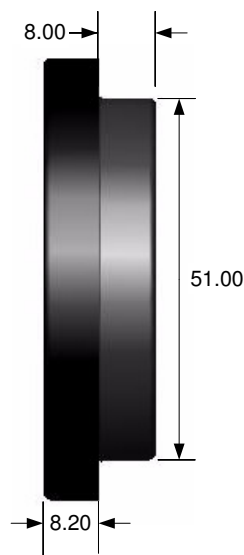
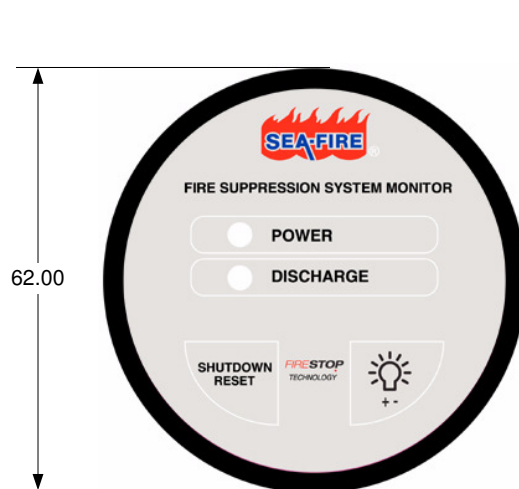


SEA-FIRE FIRE SUPPRESSION SYSTEM MONITOR WITH ENGINE SHUTDOWN CONTROL. Part No. 131-411



FEATURES

- ✓ VISUAL/AUDIBLE EXTINGUISHER DISCHARGE INDICATION
- ✓ ENGINE AND MACHINERY SHUTDOWN RESET
- ✓ 12/24 VDC
- ✓ WEATHERPROOF
- ✓ DAY/NIGHT LED DIM FUNCTION

OPERATION

During power on, the Power and Discharge LED's will light and the alarm will sound for one second. This is a test function to test the integrity of the wiring. After this test, if there are no faults, only the green Power LED will remain lit.

Should the Sea-Fire extinguisher discharge, the red discharge LED will light and the alarm will sound. Cylinder discharge will cause the relays in the Sea-Fire ESRS to shut down the engines and ventilation. The alarm can be silenced and the relays reset by pressing the shutdown reset button. The red discharge LED will remain lit.

If the cylinder has not been replaced next time the power is turned on, the alarm will sound continuously and the discharge LED will light. The alarm can be silenced by pressing the shutdown reset button. This will also reset the relays allowing the engines to be started.

The discharge LED can only be reset by replacing the cylinder, and performing a reset by simultaneously pressing the Shutdown reset and the LED dim button. If two panels are fitted, each panel will need to be reset.

The green Power LED can be dimmed for night operation by pressing the dim (right hand) button on the panel. There are three levels of LED brightness. The Dim button toggles between these.

INSTALLATION

Install the panel at or as near as possible to the helm station. The location selected must allow access for wiring. Drill a 51mm circular hole to locate the display.

Screw the central mounting M4 stud into the brass insert (until it stops - DO NOT OVERTIGHTEN). Secure the panel with the U bracket provided. Hand tight only.

Prior to proceeding with electrical connections, ensure that the Sea-Fire automatic fire extinguisher has been properly installed in the compartment to be protected in accordance with the instructions supplied with the extinguishing unit.



ELECTRICAL CONNECTIONS

This unit is protected against reverse polarity.

Connect the plug on the back of the panel to the corresponding plug on the Sea-Fire ESRS shutdown unit.

INSTALLATION CHECK

When power is applied to the panel, the Power and Discharge LED'S will light and the alarm will sound for one second. After this period just the green Power LED will remain lit.

Disconnecting either lead at the extinguisher pressure switch will activate the audible alarm and illuminate the Discharge LED and will cause the engines and machinery to stop. Pressing Shutdown Reset will allow them to be restarted. The alarm will also silence.

Reconnect the pressure switch at the extinguisher.

Press the Shutdown Reset button and the LED Dim button simultaneously to reset the panel.